

Please refer to [www.deeplas.co.uk](http://www.deeplas.co.uk) for updates prior to installation



Outdoor ground covering

# TERRACE / TERRACE +

Product guide



deeplas









## ***Twinson Best of both worlds***

Welcome to the world of Twinson, where nature and technology go hand in hand. Twinson is made of wood and PVC. By combining the advantages of both materials in a single new base material, Twinson gives you the best of both worlds: the natural appearance and warm feel of wood as well as the low-maintenance and durability of PVC. Twinson is 100% recyclable which makes it an environmentally friendly alternative to tropical hardwood.



# Elegant, long-lasting decking, with respect for nature

*Thanks to its natural appearance, Deceuninck Terrace blends in beautifully with natural surroundings and can be used for a wide range of terrace applications. Moreover Deceuninck Terrace is easy to maintain, has a high slip resistance for optimum safety and is 100% recyclable.*

## Easy to maintain

Because Deceuninck Terrace is made of Twinson, it has the durability and the low maintenance of PVC. Deceuninck Terrace retains its strength and gradually obtains a natural patina due to its exposure to the outside elements, without the need for regular painting or staining. The boards do not split, splinter or rot, are UV-stable and resistant to insects. Accidental stains clean up quickly and simple cleaning with a pressure cleaner is all that is required.

## High slip resistance

Deceuninck Terrace has a grooved wood-brushed finish, which offers a natural design, combined with safety and comfort. It provides high slip resistance, even when wet. What's more, Deceuninck Terrace boasts the highest and safest classification for barefoot and rubber sole slip resistance!

## Environmentally friendly

Deceuninck's Twinson-based Terrace has all the advantages of tropical hardwood, and more. While tropical hardwood is only available in the threatened rain forests, Twinson is 100% PEFC-certified. This means that the wood used in Twinson comes from managed sustainable forests. Twinson has a long life expectancy, hence the products that contain it guarantees years of quality service. After their usable life, they can be 100% recycled and reused without loss of quality.



### About PEFC

The Program for the Endorsement of Forest Certification (PEFC) is an international non-profit organisation dedicated to sustainable forest management. PEFC ensures that the number of trees harvested is not greater than the number replanted, and that biodiversity is retained. Deceuninck Terrace is made of Twinson which is PEFC certified.



*A unique single base material combining all the advantages of wood & PVC*

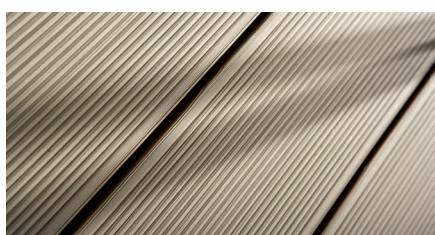
• natural appearance	• low maintenance
• splinter free	• water resistant
• resistant to insects	• easy to fit
• does not split	• robust
• environmentally friendly (100% recyclable)	• assembly with concealed system
• durable	• high slip resistance, even when wet





# Two Terrace solutions: numerous Twinson advantages

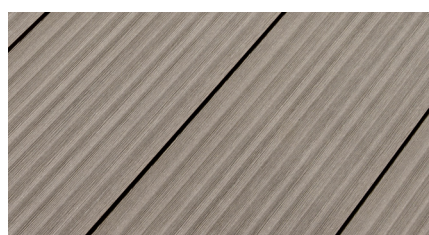
*Give your creativity free reign with Deceuninck Terrace. Like wood, Deceuninck's decking solutions can be cut into an endless number of shapes and designs! With a choice of 8 natural colours, it is the perfect complement to any architecture or landscape. Deceuninck offers 2 solutions: Deceuninck Terrace and Deceuninck Terrace+.*



## Deceuninck Terrace: the classic solution

Designed for easy installation and with double-sided planks that allow a choice of surface finishes, Deceuninck Terrace is the ideal solution for residential applications such as garden paths, patios and terraces.

- Deceuninck decking solution with all the advantages of the unique single based Twinson material
- Designed for easy and quick installation with a substructure span of 500mm and patented clips
- Choice of two finishes thanks to double-sided planks
- Carries the PEFC-label, the French NF 514 label provided by LNE and the German VHI quality label



## Deceuninck Terrace+: the premium solution

Deceuninck Terrace+ is the premium solution by Deceuninck for more intensive usage.

It can be used for residential as well as commercial applications such as hotels and restaurants.

- Deceuninck decking solution with all the advantages of the unique single based Twinson material
- Designed for easy and quick installation thanks to substructure span of 600mm and patented clips
- Single sided premium finish with optically closed surface.
- Individual planks can easily be replaced
- Carries the PEFC-label, the French NF 514 quality label provided by LNE and the German VHI quality label

## Colour samples

The colour samples are reproductions and can deviate from the originals. The large inset shows the natural colour which Deceuninck Terrace will change to over time. Twinson contains wood fibres, susceptible to differences in colour and appearance. As soon as the product is exposed to sun and rain, these fibres will undergo a natural ageing process and will be subject to colour changes. After a couple of months, the final patina will be obtained. Planks should be mixed prior to installation to gain a natural effect.



506 - apricot



510 - slate grey



503 - hazelnut



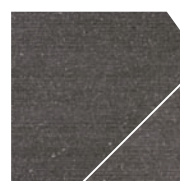
504 - bark



509 - riverstone



522 - walnut



505 - turf



502 - liquorice

# Installation overview Deceuninck Terrace

## 1. Define your foundation

**Fixed**  
substructure directly fixed into foundation

Existing foundation



Existing Terrace

New foundation



Concrete

**Floating**  
no fixation of substructure into foundation

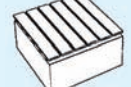
New foundation



Gravel



Concrete posts



Roof/Elevated

## 2. Choose your substructure

**Fixed**  
**Fully supported**



P 9552

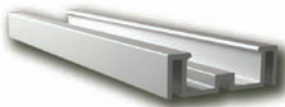
Twinson non structural profile

**Fixed**  
**Not fully supported**



P 9522

Aluminium non structural profile



P 9523

Aluminium non structural profile

**Floating**  
**Framework**

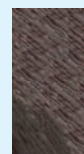


P 9524

Aluminium structural profile



Assemble with joiner  
P 9495/9496



Hardwood  
Wooden support beam

**Paving support pad**



3-5 cm  
P 9532



5-9 cm  
P 9533



15 - 19 cm  
P 9534

## 3. Place plank and clips

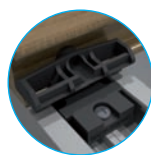
**Fixed**



P 9483/9484  
kit clip + screw



P 9486  
kit clip + screw



P 9486  
kit clip + screw

**Floating**



P 9486  
kit clip + screw



P 9483/9484  
kit clip + screw

## 4. Choose your finishing

Finish with plinth



P 9556

Finish with end cap



P 9482  
kit endcap + clip

Finish with alu F-profile / Finish with alu L-profile



Silver anodized  
F: P 9543  
L: P 9518



Black anodized  
F: P 9543  
L: P 9518



Brown anodized  
F: P 9543  
L: P 9518

# Quality installation assured

## Installation manual makes it easy

Deceuninck Terrace and Terrace+ are designed for easy installation. The full installation manual can be downloaded from [www.twinson.com/terrace](http://www.twinson.com/terrace). Design your system, then follow the easy instructions to cut the boards to size, fix them to the frame using the concealed clip system and cover the edges with the Deceuninck Terrace finishing trims. Deceuninck provides all the tools to ensure a clean and long-lasting installation!

## Design it yourself with free professional calculation software

Both Terrace and Terrace+ are supported by Deceuninck's professional calculation software. The software for Terrace and Terrace+ is available online at [www.twinson.com/terrace](http://www.twinson.com/terrace). Simply input your surface dimensions, and the software creates an optimum design with a minimum of waste. It also calculates the technical requirements and generates a material list.

## Deceuninck Terrace and Deceuninck Terrace+ software:

- Features handy drawing tools
- Allows design changes & refinements
- Optimises formats to minimise waste
- Automatically calculates material list

An installation movie, installation manual and free calculation software for Deceuninck Terrace and Terrace+ are available at

 [www.twinson.com/terrace](http://www.twinson.com/terrace)

These tutorials for both professional and DIY users ensure easy installation and years of trouble free use.



# Installation overview Deceuninck Terrace+

## 1. Define your foundation

**Fixed**  
substructure directly fixed into foundation

Existing foundation



Existing Terrace

New foundation



Concrete

**Floating**  
no fixation of substructure into foundation



Gravel

New foundation



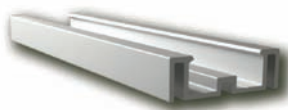
Concrete posts



Roof/Elevated

## 2. Choose your substructure

**Fixed**  
**Fully supported**



P 9523

Aluminium non structural profile

**Fixed**  
**Not fully supported**



P 9522

Aluminium non structural profile

**Floating**  
**Framework**

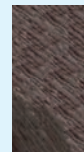


P 9524

Aluminium structural profile



Assemble with joiner  
P 9495/9496



Hardwood

Wooden support beam

**Paving support pad**



3-5 cm  
P 9532



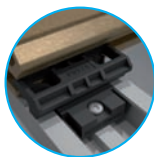
5-9 cm  
P 9533



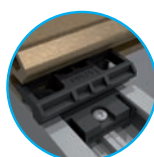
15 - 19 cm  
P 9534

## 3. Place plank and clips

**Fixed**



P 9494  
kit clip + screw



P 9494  
kit clip + screw

**Floating**



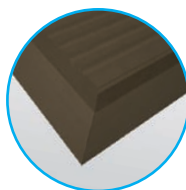
P 9494  
kit clip + screw



P 9526

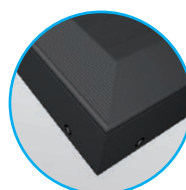
## 4. Choose your finishing

Finish with plinth

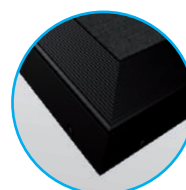


P 9556

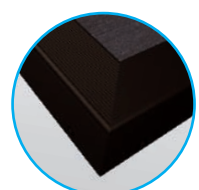
Finish with alu L-profile



Silver anodized  
P 9518



Black anodized  
P 9518

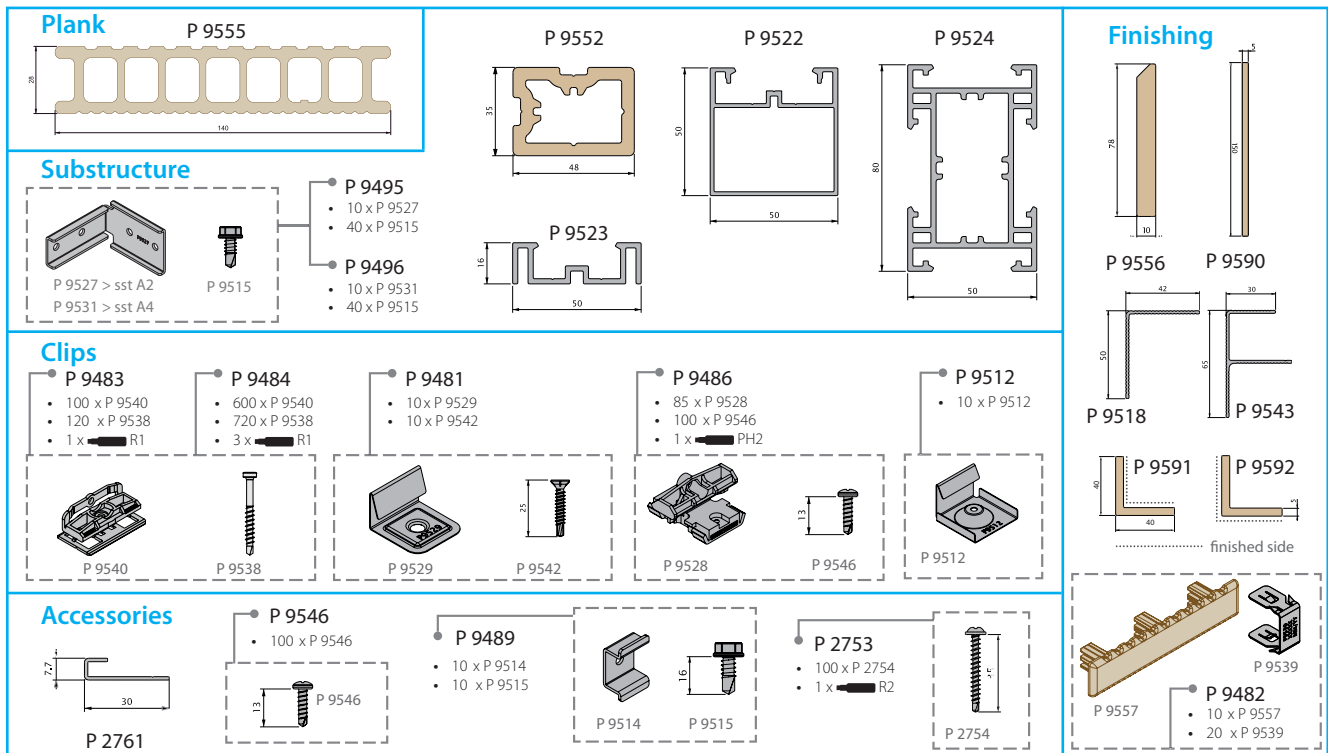


Brown anodized  
P 9518

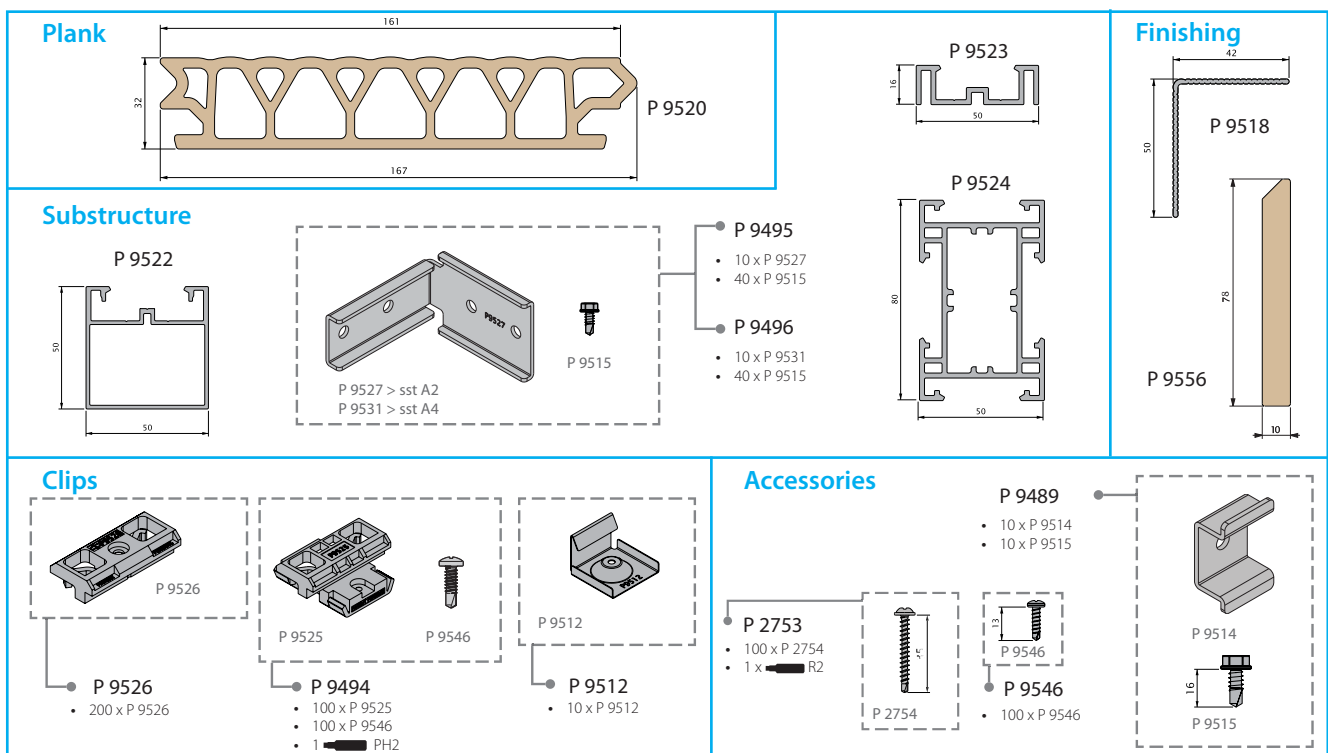
# Component overview

## Deceuninck Terrace & Deceuninck Terrace+

### Deceuninck Terrace



### Deceuninck Terrace +







YOUR DEEPLAS PARTNER

