

ORSIS (UK) LIMITED

Orsis S2-M Electronic Single Phase Meter



The S2-M has been designed with accuracy and reliability in mind and Benefits from the integration with the Orsis communications platform for remote monitoring and data transmission via GPRS communications protocols.

The S2-M is a compact and secure domestic style, single phase electric meter that delivers a cost effective solution for one or two rate domestic applications. The S2-M can be integrated with an Orsis transmission device (WRF02-NF—Data Logger and Communications Module) enabling two way communications.

The energy consumption data is transmitted to the Orsis back office system for data verification and forwarded to suppliers and Data Collectors/Data Aggregators.

The data retrieved can be used by the consumer to understand their energy consumption levels and manage their fiscal and environmental cost from the information provided.

Features

Accuracy Class B MID & IEC	12kV impulse withstand
KWh Import or KWh Import/Export	High security, compact design (130mm x 140mm High x 45mm Deep)
MID Approved	BS Double
Large digit (9.8mm) display with chevron information indication	Permanently fixed main cover
Extensive security data	IP53 in accordance with IEC 60529:2004
Communications as standard	

Security Features

The meter stores all registration and security data to non-volatile memory

All data is retained for the life of the meter

Reverse run event count

Reverse run energy total

Reverse run indication on LCD (Meter Display)

Power fail count

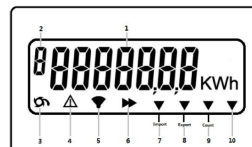
Elapsed time count

Terminal cover removal count (on power)

Displays

The liquid crystal display is programmed to show “Segment Test” and Cumulative kWh import.

High contrast 9.8mm x 3.5mm display with wide viewing angle



SMART METERING—THE PRODUCT RANGE
Smart, Reliable, Flexible and Cost Effective Metering

WWW.ORSIS.CO.UK

Technical Information

Current range	0.5 - 10(100)A
Voltage range	175—275V
Frequency	50Hz
System Connection	1 Phase, 2 Wire
Burden (230V)	
Insulation	
Impulse Withstand	
IrDA Baud Rates	300 — 9600
Serial Baud Rates	
Certified Product Life	15 Years
Temperature	-25C—55C (Operational Range), -25C—85C (Storage)
Humidity	Annual mean 75% (for 30 days spread over one year, 95%) Minimum value 5%, Maximum value 95%
Weight	250 grams
Specifications	
Case	IP53 to IEC62059:1989

Approved to **EN 62053-21:2003**

Comply with EMC standard **EN 50081-1:1992**