

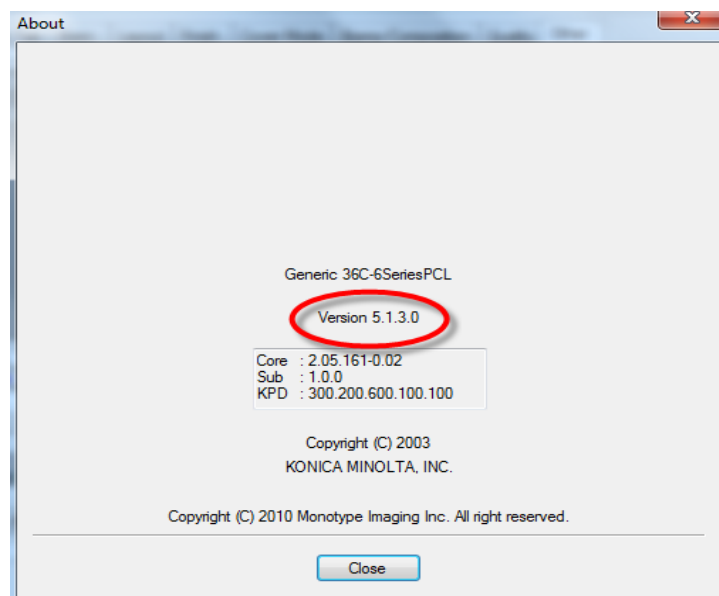
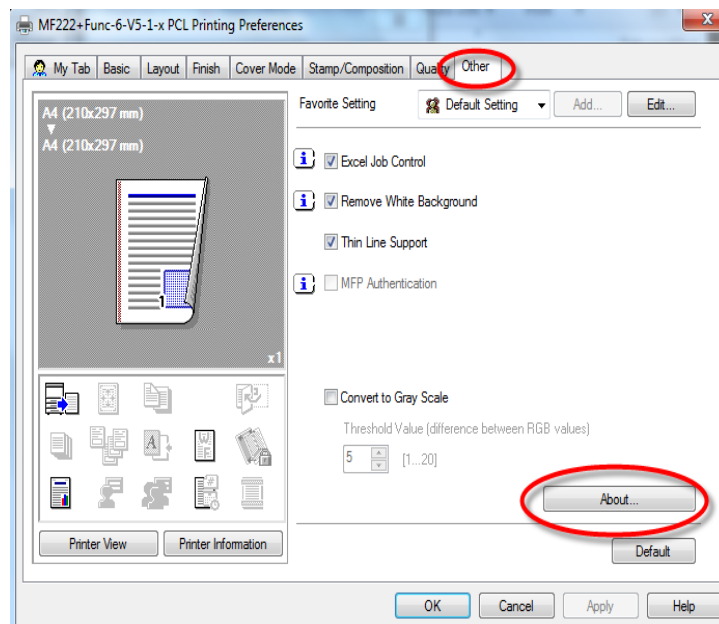


Olivetti UK Tech Support

SUBJECT :- FUNCTION ENHANCMENT,FIRMWARE,PRINTER DRIVER GUIDE	Model:- MF222+MF552+	Date:- 1/11/2014
--	----------------------	------------------

It is very important when upgrading firmware to have the correct printer driver installed and set to the correct function version prior to upgrading the F/W you must check which print driver is installed

Driver version is 5.1.3.0 is required for the latest F/W A5C10Y0-F000-G20-G9



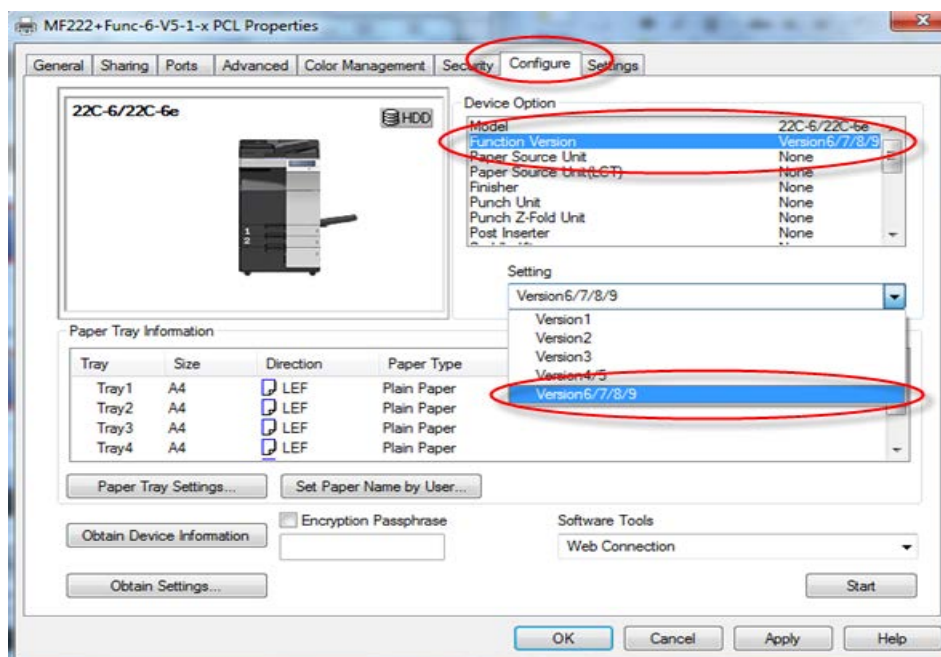
Once you have determined the driver version you can then reload or update the firmware



Olivetti UK Tech Support

SUBJECT :- FUNCTION ENHANCMENT,FIRMWARE,PRINTER DRIVER GUIDE	Model:- MF222+MF552+	Date:- 1/11/2014
--	----------------------	------------------

It is recommended that you always match the driver version, function level and firmware versions
If this is not possible there could be issues especially with account track or open API solutions



NB versions 6,7,8,9 are only available on printer driver version 5.x.x.x

Once the firmware has been updated you **must** check that both the machine and driver are set to the correct Function Enhancement Levels.

FW Version	Soft Switch No 25	Function Version	Driver Version
FW Ver G20-J6	Hex Assignment: 60	Function Version 7	Driver 5.1.x.x
FW Ver G20-G9	Hex Assignment: 50	Function Version 6	Driver 5.1.x.x
FW Ver G20-E4	Hex Assignment: 40	Function Version 5	Driver 4.1.x.x
FW Ver G20-C8	Hex Assignment: 40	Function Version 5	Driver 4.1.x.x
FW Ver G20-A9	Hex Assignment: 20	Function Version 3	Driver 3.1.x.x
FW Ver G20-63	Hex Assignment: 20	Function Version 3	Driver 3.1.x.x

[FTP SITE FOR FIRMWARE & DRIVERS](#)

[OLIVETTI UK SUPPORT WEBSITE](#)



Olivetti UK Tech Support

SUBJECT :- FUNCTION ENHANCMENT,FIRMWARE,PRINTER DRIVER GUIDE

Model:- MF222+MF552+

Date:- 1/11/2014

Zeus \ Minerva product FW code explanation

Product Names Product Model Numbers

Zeus – MF224\MF284\MF364\MF452\MF552 Plus and non Plus versions
Minerva – MF652\MF752 Plus and non Plus versions

This is a guide to explain the difference between how a FW is described by the version numbers.

IE- G20-68 \ G00-68 \ GC1-68 etc.

The letters in the code are described as below:

Example **G20-68**

MassProductionVersion

This part of the code represents the overall version number (i.e. V 1.0 \ V2.0) etc. and is incremented when a complete version change has taken place.

FW Description Code.

This part of the code describes the type of FW, Mass Production \ Special FW \ FW that contains the web browser \ bug fix \ customised

Product StageCode

This code describes the product stage. G is in production so will always stay as G



Olivetti UK Tech Support

SUBJECT :- FUNCTION ENHANCMENT,FIRMWARE,PRINTER DRIVER GUIDE	Model:- MF222+MF552+	Date:- 1/11/2014
--	----------------------	------------------

Further explanations

Mass Production version number

The mass production number will change when a new version is ready to be launched. (i.e. G**-68 will increase to G**-72)

For Zeus and Minerva 2 types of mass-production where available.

G00-** = Mass Production FW.

G20-** = Mass Production FW that also contains the WEB Browser.

Note. On a small number of occasions a specific bug fix is available on the previous version of FW and is not available on the new Mass Production version, This happens when timing of the mass production release coincides with an urgent bug fix, There for if you specifically need a published bug fix that is on a special it is advised to check the date of release in the read me to see if it is later than the current Mass Production. Once the next version is released at a later date it will then contain the bug fix.

As the 'PLUS' version has been released only the G20-**Mass production (web browser) version is available. To reach conformity all current FW for Zeus and Minerva will only have the Web Browser version released in the future and can be installed on a machine that does not require the web browser.

Bug Fixes

In-between the launch times of mass production FW that require a complete factory test it is important to deliver bug fixes as soon as possible to the field and an interim bug fix will be released,

EG, G20-68 will increase to GD1-68 and then to GD2-68. Until the next mass-production is available.

FW Description Code

G00-** = Mass production

G20-** = Mass production (includes web browser)

GC*-** = Bug Fix version

GD*-** = Bug Fix version (includes web browser)

Other description codes

GQ*-**

GX*-**

These versions will be for special customization of the FW and before upgrading it is important to know why this FW was installed in the first place and completely read the FW read me files before upgrading to a newer version of the customised FW for any Soft Switches and settings that are required.

Note:

Occasionally a FW will only be released by our European headquarters and not directly from Japan and may contain notations in the title such as:

MSG1

MSG2

And so on, These will contain different language packs and can be used in the UK with no problems due to English always being included in the language packs.